

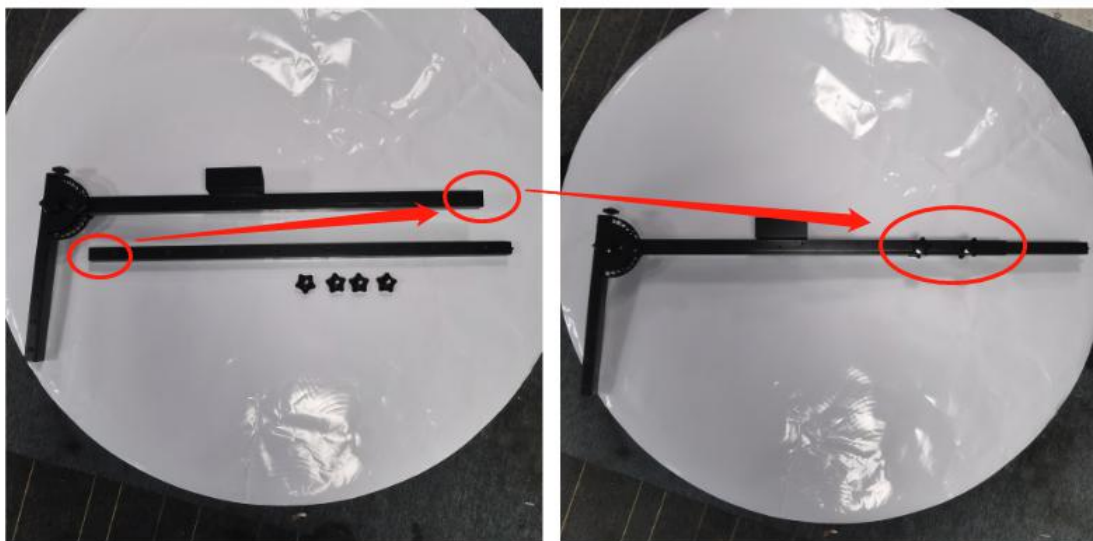
Installation manual



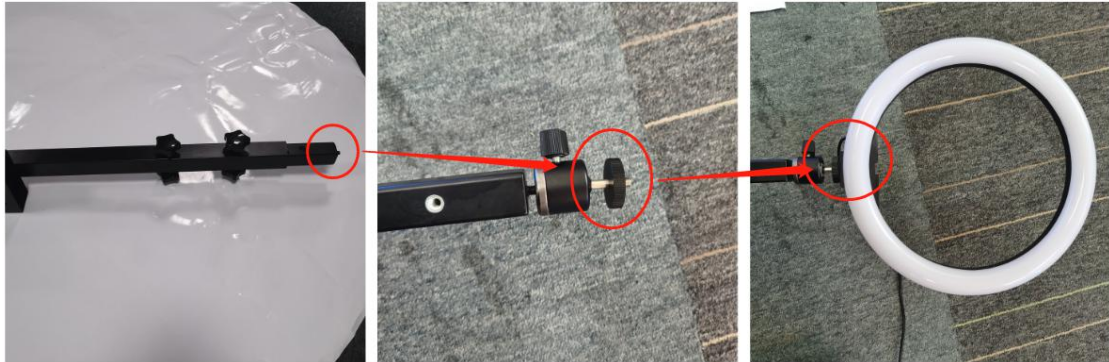
Installation steps:

1. Install fill light + mobile phone and tablet holder.

(1) Put the telescopic bracket into the rotating arm and fix it with screws.



(2) Install the gimbal + fill light on the top of the arm.



(3) Install the silver double-head screw + gimbal + mobile phone bracket on the fill light.

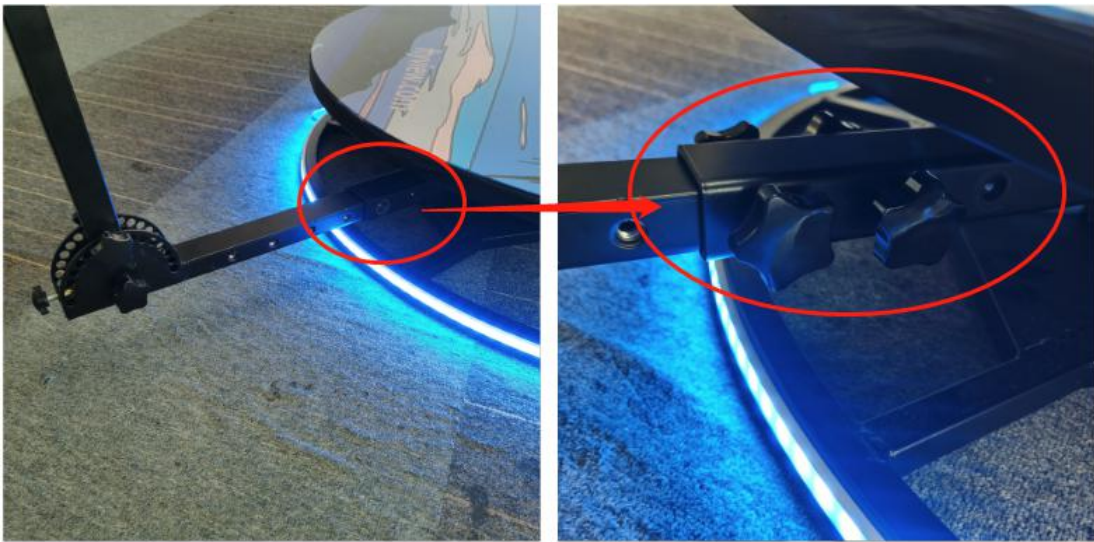


(4) Install the fixing clip + flat bracket.



2. Install the rotating arm, adjust the angle and height.

(1) Insert the rotating arm and fix the screws.



(2) Adjust the angle and height of the rotating arm to a suitable position.



3. Install the bottom LED strip.

(1) Tear off the adhesive of the LED light bar, start pasting it along the power supply port of the base, and make a circle around it.

(2) Avoid the lamp post, cut off the extra part of the lamp bar, and fix the position of the lamp bar joint with a cable tie or tape.



4. Connect the power supply port of the motor and the LED light bar with an adapter.



5. Use your own mobile phone power bank to power the LED fill light.



6. Use the remote control to change the rotation speed and direction of the rotating arm.

Battery for remote

23A 12V

